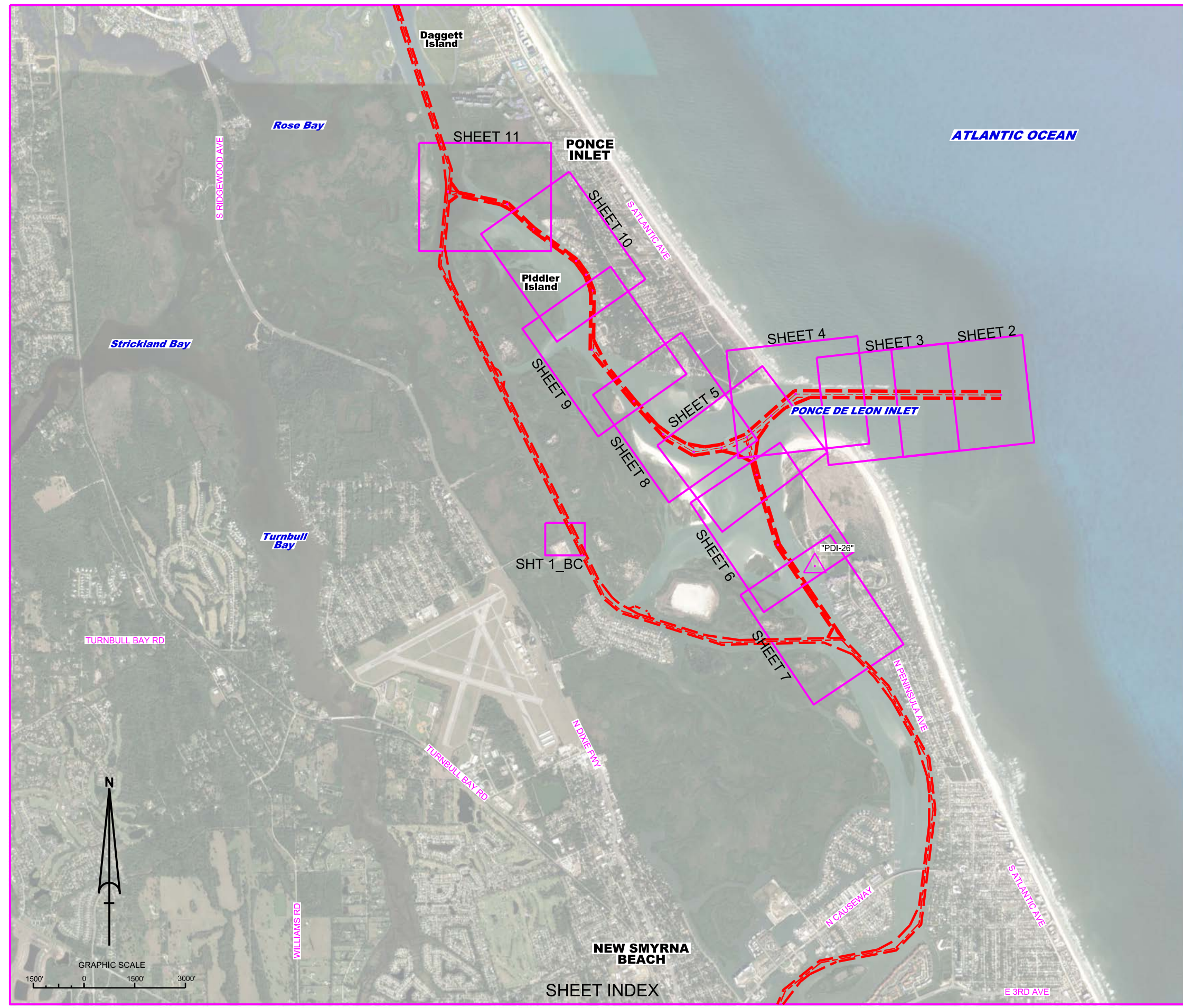


PONCE DE LEON INLET VOLUSIA COUNTY, FLORIDA PROJECT COINDITION / EXAM SURVEY FY22 7, 12 AND 15-FOOT PROJECT



US Army Corps of Engineers
Jacksonville District
SAFETY ON THIS JOB
DEPENDS ON YOU

DEPARTMENT OF THE ARMY
JACKSONVILLE DISTRICT, CORPS OF ENGINEERS
JACKSONVILLE, FLORIDA



SURVEY NOTES

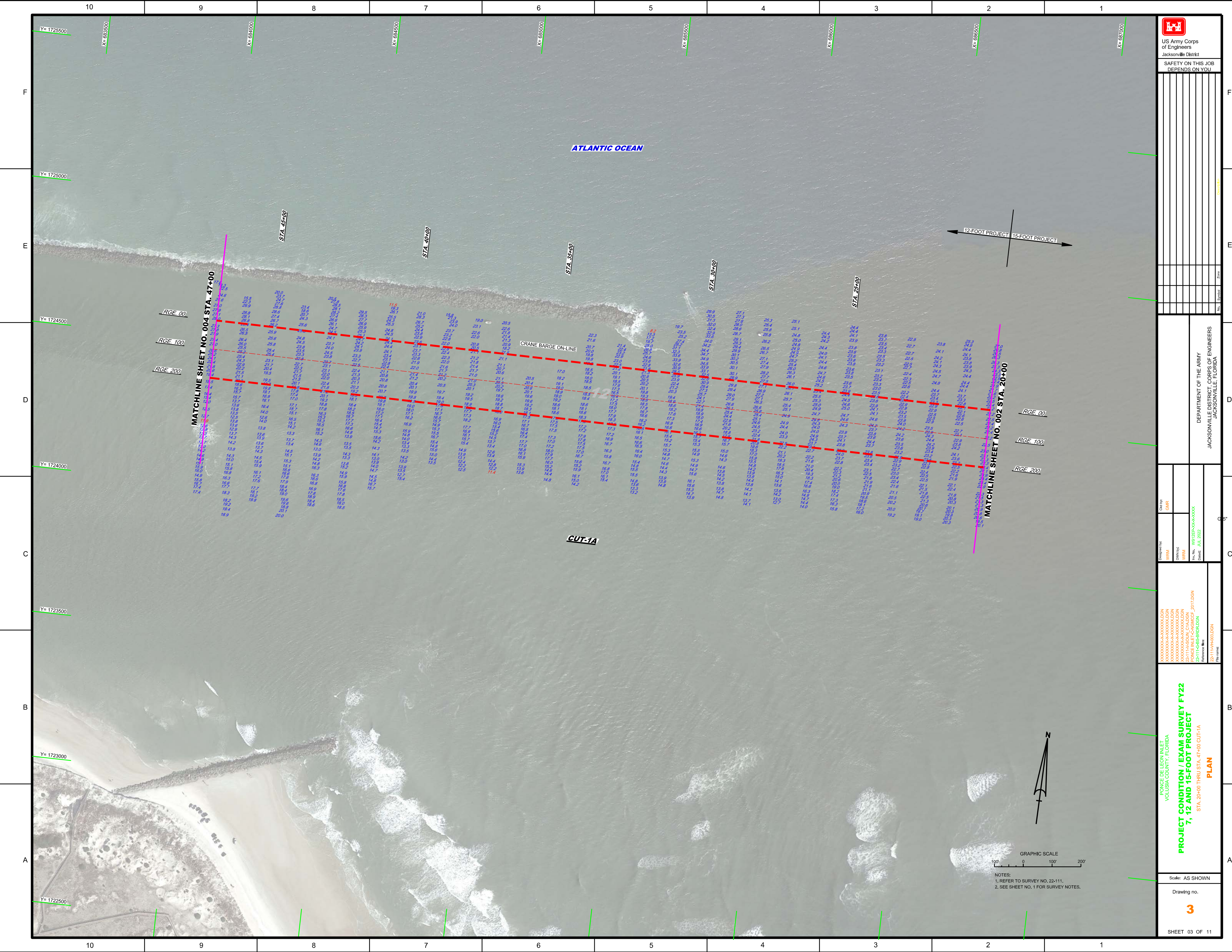
- REFER TO SURVEY NO. 22-111.
 - TIDAL REDUCTIONS WERE OBTAINED UTILIZING A REAL-TIME KINEMATIC (RTK) GPS AND REFERENCED TO MLLW. KTD FILE NAME IS: "VOLUSIA-BREVARD (W-O_CANAVERALHBR_2021 10 04.KTD)".
 - ALL ELEVATIONS ARE BELOW THE CHART DATUM UNLESS PRECEDED BY A (+) SIGN.
 - PLANE COORDINATES ARE BASED ON THE TRANSVERSE MERCATOR PROJECTION FOR THE EAST ZONE OF FLORIDA AND REFERENCED TO NORTH AMERICAN DATUM OF 1983 (NAD83).
 - ALL STATIONING REFERS TO THE CENTERLINE OF THE CHANNEL.
 - THIS SURVEY WAS PERFORMED USING REAL-TIME KINEMATIC (RTK) GPS POSITIONING WITH THE FOLLOWING REFERENCE BASE LOCATION:
REFERENCE BASE LOCATED AT "PDI-26" (OPUS PID: DK6691)
TIDE STAFF SET FROM "872-1147 TIDAL 1 (NGS PID: AQ1522)
 - DEPTHS DEPICTED BY THIS SURVEY ARE REFERENCED TO MLLW, TIDAL EPOCH 1983-2001 AS REPORTED BY THE NATIONAL OCEANIC AND ATMOSPHERIC ADMINISTRATION (NOAA). NOAA'S VDATUM MODEL WAS USED AND CALIBRATED TO THE PUBLISHED MLLW HEIGHTS OF THE BENCHMARKS ASSOCIATED WITH THE TIDE GAUGE SITES SPECIFIED BELOW:
NOAA TIDAL STATION 872-1147 TIDAL A (OPUS PID: DK6692) FOR ALL CUTS.

VERTICAL MEASUREMENTS WERE MADE USING A ROSS SMART SOUNDER MODEL 835C WITH A DUAL-FREQUENCY (28/200 KHZ) SINGLE-BEAM TRANSDUCER. ALL SOUNDINGS SHOWN ARE IN HIGH FREQUENCY.
- | VESSEL | DATE OF SURVEY | CUT |
|--------|----------------|------------------------------|
| SB-36 | 12 JUL 2022 | CUTS 3S, 12N AND 13N |
| SB-36 | 13 JUL 2022 | CUTS 1S, 2S, 9N, 10N AND 11N |
| SB-36 | 14 JUL 2022 | CUTS 6N, 7N AND 8N |
| SB-36 | 15 JUL 2022 | CUTS 3A, 3N, 4N AND 5N |
| SB-36 | 18 JUL 2022 | CUTS 1A AND 2A |
| SB-36 | 19 JUL 2022 | CUT-1A AND BARGE CANAL |
- AIDS TO NAVIGATION WERE LOCATED DURING THIS SURVEY.
 - THE INFORMATION DEPICTED ON THIS MAP REPRESENTS THE RESULTS OF SURVEYS MADE ON THE DATES INDICATED ABOVE AND CAN ONLY BE CONSIDERED AS INDICATING THE GENERAL CONDITIONS AT THAT TIME. THIS CHART IS SOLELY FOR THE DISTRIBUTION OF AVAILABLE DEPTHS AT THE TIME OF THE SURVEY.
 - SURVEY ACCURACY PERFORMANCE STANDARDS, QUALITY CONTROL, AND QUALITY ASSURANCE REQUIREMENTS WERE FOLLOWED DURING THIS SURVEY IN ACCORDANCE WITH USACE EM 1110-2-1003, HYDROGRAPHIC SURVEYING, 30 NOV 2013.

LEGEND	
	MONUMENT
	LIGHTED BEACON
	GREEN DAYBEACON
	RED DAYBEACON
	RED LIGHTED BUOY
	GREEN LIGHTED BUOY
	CAN BUOY
	NUN BUOY
	TIDE STAFF
	PROJECT DEPTH

PROJECT CONDITION / EXAM SURVEY FY22
7, 12 AND 15-FOOT PROJECT
INDEX, LOCATION AND VICINITY
MAP

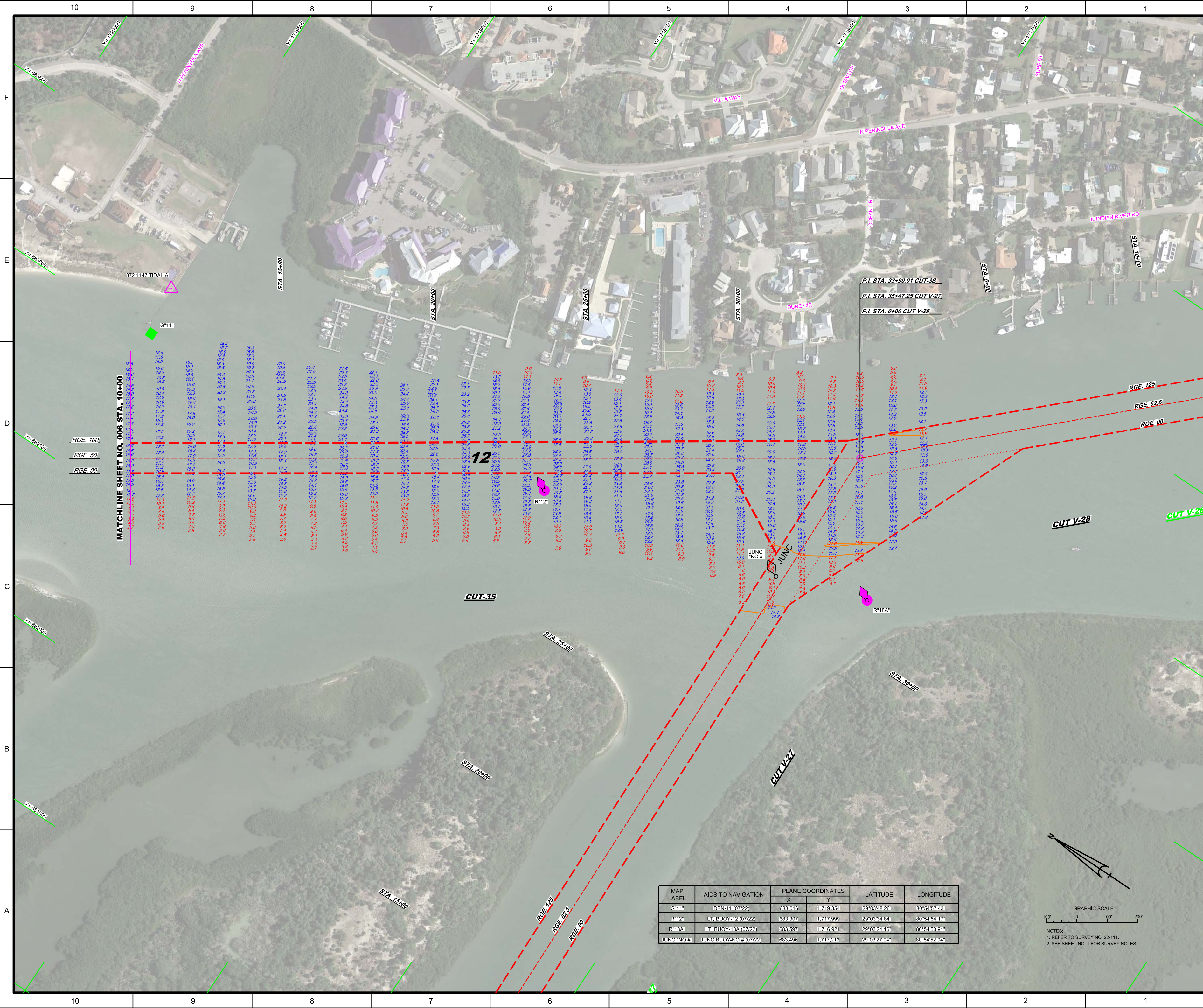
Scale: AS SHOWN
Drawing no. **1**
SHEET 01 OF 11



Checked by:	GHR
Designed by:	WRM
Drawn by:	WRM
File No.:	WP22-111-1-003
Date:	JULY 2022
Reference File:	22-111-1-003-001.DGN
File Name:	22-111-1-003-001.DGN

PROJECT CONDITION / EXAM SURVEY FY22
7, 12 AND 15-FOOT PROJECT
 STA. 20+00 THRU STA. 47+00 CUT-1A
PLAN

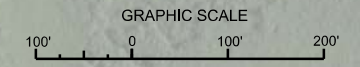
Scale: AS SHOWN
 Drawing no. **3**
 SHEET 03 OF 11



MATCHLINE SHEET NO. 006 STA. 10+00

RGE. 100	18.8	18.9	19.0	19.1	19.2	19.3	19.4	19.5	19.6	19.7	19.8	19.9	20.0	20.1	20.2	20.3	20.4	20.5	20.6	20.7	20.8	20.9	21.0	21.1	21.2	21.3	21.4	21.5	21.6	21.7	21.8	21.9	22.0	22.1	22.2	22.3	22.4	22.5	22.6	22.7	22.8	22.9	23.0	23.1	23.2	23.3	23.4	23.5	23.6	23.7	23.8	23.9	24.0	24.1	24.2	24.3	24.4	24.5	24.6	24.7	24.8	24.9	25.0	25.1	25.2	25.3	25.4	25.5	25.6	25.7	25.8	25.9	26.0	26.1	26.2	26.3	26.4	26.5	26.6	26.7	26.8	26.9	27.0	27.1	27.2	27.3	27.4	27.5	27.6	27.7	27.8	27.9	28.0	28.1	28.2	28.3	28.4	28.5	28.6	28.7	28.8	28.9	29.0	29.1	29.2	29.3	29.4	29.5	29.6	29.7	29.8	29.9	30.0		
RGE. 50	18.7	18.8	18.9	19.0	19.1	19.2	19.3	19.4	19.5	19.6	19.7	19.8	19.9	20.0	20.1	20.2	20.3	20.4	20.5	20.6	20.7	20.8	20.9	21.0	21.1	21.2	21.3	21.4	21.5	21.6	21.7	21.8	21.9	22.0	22.1	22.2	22.3	22.4	22.5	22.6	22.7	22.8	22.9	23.0	23.1	23.2	23.3	23.4	23.5	23.6	23.7	23.8	23.9	24.0	24.1	24.2	24.3	24.4	24.5	24.6	24.7	24.8	24.9	25.0	25.1	25.2	25.3	25.4	25.5	25.6	25.7	25.8	25.9	26.0	26.1	26.2	26.3	26.4	26.5	26.6	26.7	26.8	26.9	27.0	27.1	27.2	27.3	27.4	27.5	27.6	27.7	27.8	27.9	28.0	28.1	28.2	28.3	28.4	28.5	28.6	28.7	28.8	28.9	29.0	29.1	29.2	29.3	29.4	29.5	29.6	29.7	29.8	29.9	30.0	
RGE. 00	18.6	18.7	18.8	18.9	19.0	19.1	19.2	19.3	19.4	19.5	19.6	19.7	19.8	19.9	20.0	20.1	20.2	20.3	20.4	20.5	20.6	20.7	20.8	20.9	21.0	21.1	21.2	21.3	21.4	21.5	21.6	21.7	21.8	21.9	22.0	22.1	22.2	22.3	22.4	22.5	22.6	22.7	22.8	22.9	23.0	23.1	23.2	23.3	23.4	23.5	23.6	23.7	23.8	23.9	24.0	24.1	24.2	24.3	24.4	24.5	24.6	24.7	24.8	24.9	25.0	25.1	25.2	25.3	25.4	25.5	25.6	25.7	25.8	25.9	26.0	26.1	26.2	26.3	26.4	26.5	26.6	26.7	26.8	26.9	27.0	27.1	27.2	27.3	27.4	27.5	27.6	27.7	27.8	27.9	28.0	28.1	28.2	28.3	28.4	28.5	28.6	28.7	28.8	28.9	29.0	29.1	29.2	29.3	29.4	29.5	29.6	29.7	29.8	29.9	30.0

MAP LABEL	AIDS TO NAVIGATION	PLANE COORDINATES		LATITUDE	LONGITUDE
		X	Y		
G*11*	OBNET (07/22)	683.016	1719.354	29°03'48.26"	80°54'57.43"
R*12*	BUOY (07/22)	683.307	1717.999	29°03'34.84"	80°54'54.17"
R*18A*	BUOY (07/22)	683.697	1716.921	29°03'24.16"	80°54'50.91"
JUNC NO #	JUNC BUOY (07/22)	683.496	1717.212	29°03'27.04"	80°54'52.04"



NOTES:
1. REFER TO SURVEY NO. 22-111.
2. SEE SHEET NO. 1 FOR SURVEY NOTES.

US Army Corps of Engineers
Jacksonville District

SAFETY ON THIS JOB
DEPENDS ON YOU

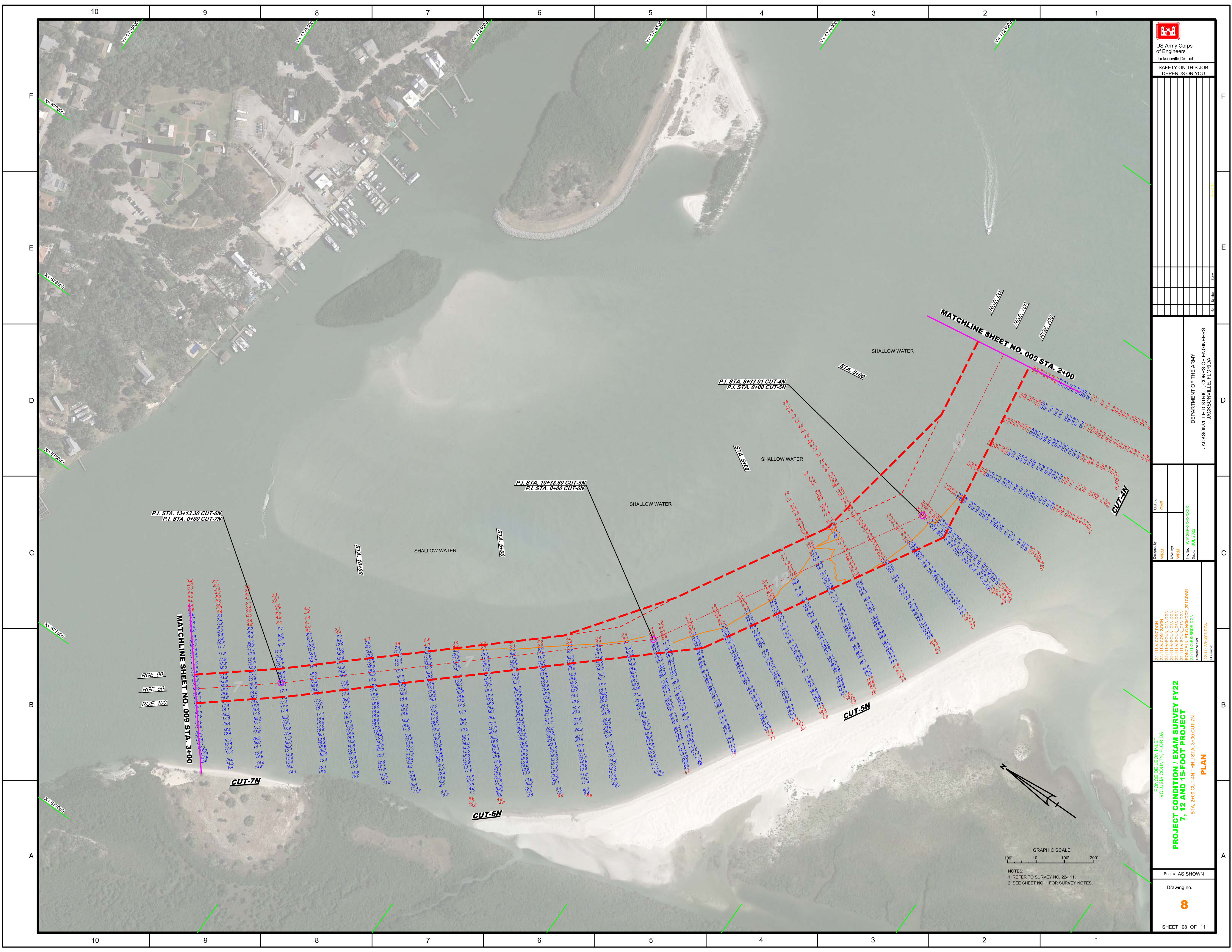
DEPARTMENT OF THE ARMY
JACKSONVILLE DISTRICT, CORPS OF ENGINEERS
JACKSONVILLE, FLORIDA


PROJECT CONDITION / EXAM SURVEY FY22
7, 12 AND 15-FOOT PROJECT
STA. 10+00 THRU STA. 39+00.01 CUT-3S
PLAN

Scale: AS SHOWN

Drawing no. **7**

SHEET 07 OF 11





US Army Corps
of Engineers
Jacksonville District

SAFETY ON THIS JOB
DEPENDS ON YOU

DEPARTMENT OF THE ARMY
JACKSONVILLE DISTRICT, CORPS OF ENGINEERS
JACKSONVILLE, FLORIDA

Checked By: GHR
Designed By: WRM
Drawn By: WRM
File No: W81255-00-00-003
Date: JUL 2022

22-111A-CO-07.DGN
22-111A-CO-02.DGN
22-111A-SO-01-CN.DGN
22-111A-SO-01-CN.DGN
PONCE INLET CAWMOCT_2017.DGN
22-111G-SB-01-01.DGN
22-111H-01-01.DGN

PROJECT CONDITION / EXAM SURVEY FY22
7, 12 AND 15-FOOT PROJECT
STA. 2+00 CUT-4N THRU STA. 3+00 CUT-7N
PLAN

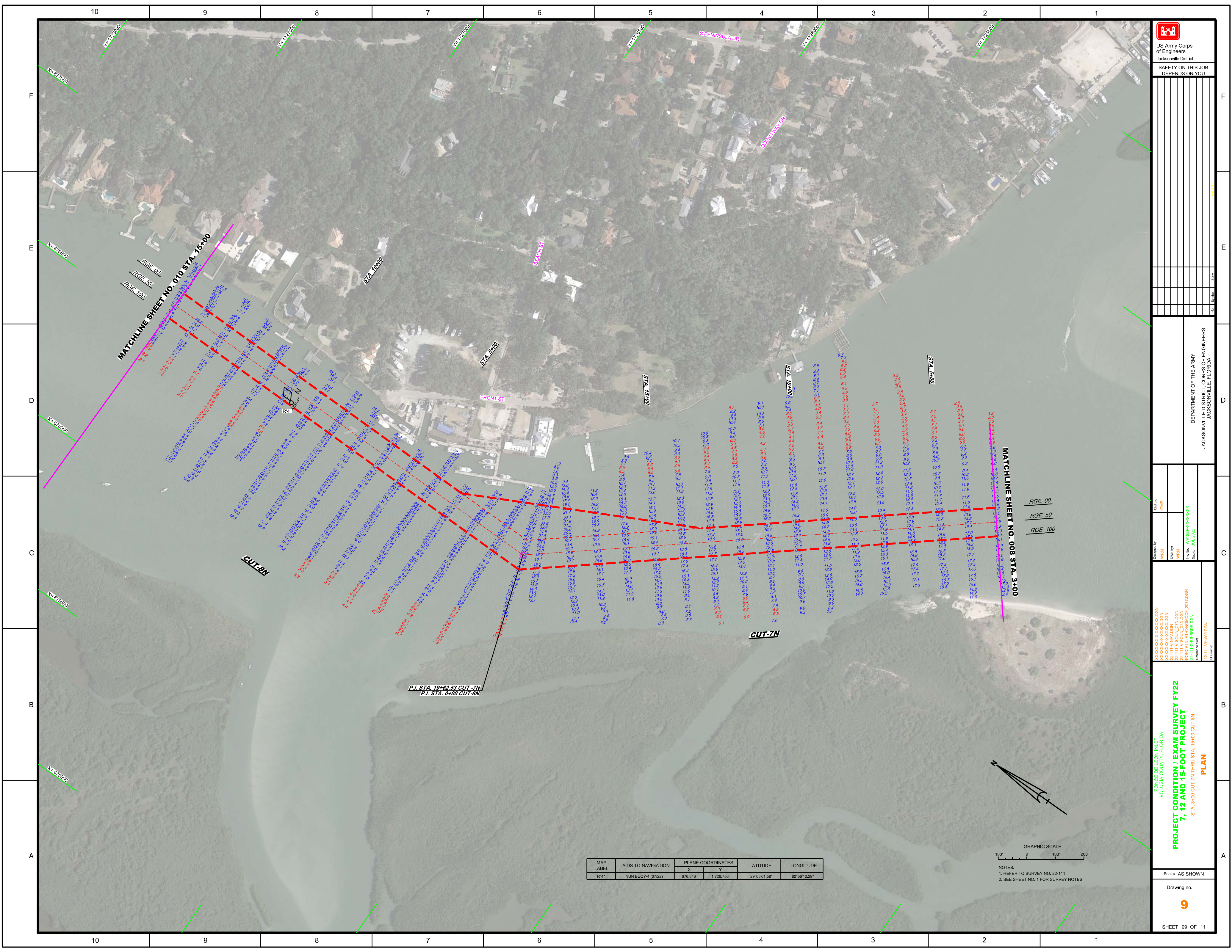
Scale: AS SHOWN


Drawing no.
8

SHEET 08 OF 11

GRAPHIC SCALE
100' 0 100' 200'

NOTES:
1. REFER TO SURVEY NO. 22-111.
2. SEE SHEET NO. 1 FOR SURVEY NOTES.




 US Army Corps of Engineers
 Jacksonville District
 SAFETY ON THIS JOB
 DEPENDS ON YOU

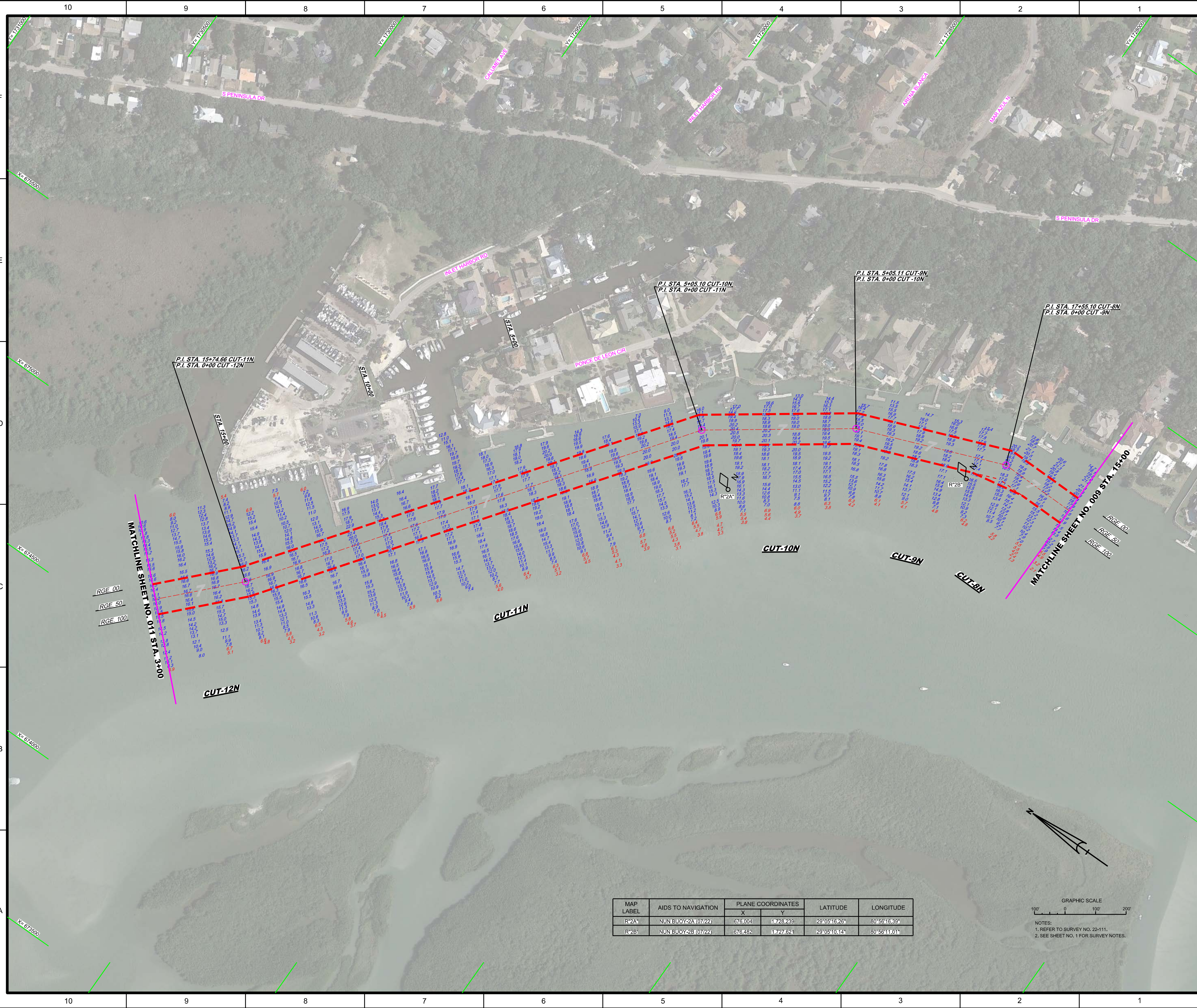
DEPARTMENT OF THE ARMY
 JACKSONVILLE DISTRICT, CORPS OF ENGINEERS
 JACKSONVILLE, FLORIDA

PROJECT CONDITION / EXAM SURVEY FY22
7, 12 AND 15-FOOT PROJECT
 STA. 3+00 CUT-7N THRU STA. 15+00 CUT-5N
PLAN

Scale: AS SHOWN
 Drawing no. **9**
 SHEET 09 OF 11

MAP LABEL	AIDS TO NAVIGATION	PLANE COORDINATES		LATITUDE	LONGITUDE
		X	Y		
R4*	NUN BUOY-4 (07/22)	676,546	1,726,756	29°09'01.58"	80°56'10.29"

GRAPHIC SCALE
 1" = 200'
 NOTES:
 1. REFER TO SURVEY NO. 22-111.
 2. SEE SHEET NO. 1 FOR SURVEY NOTES.



P.I. STA. 15+74.66 CUT-11N
P.I. STA. 0+00 CUT-12N

P.I. STA. 5+05.10 CUT-10N
P.I. STA. 0+00 CUT-11N

P.I. STA. 5+05.11 CUT-9N
P.I. STA. 0+00 CUT-10N

P.I. STA. 17+55.10 CUT-8N
P.I. STA. 0+00 CUT-9N

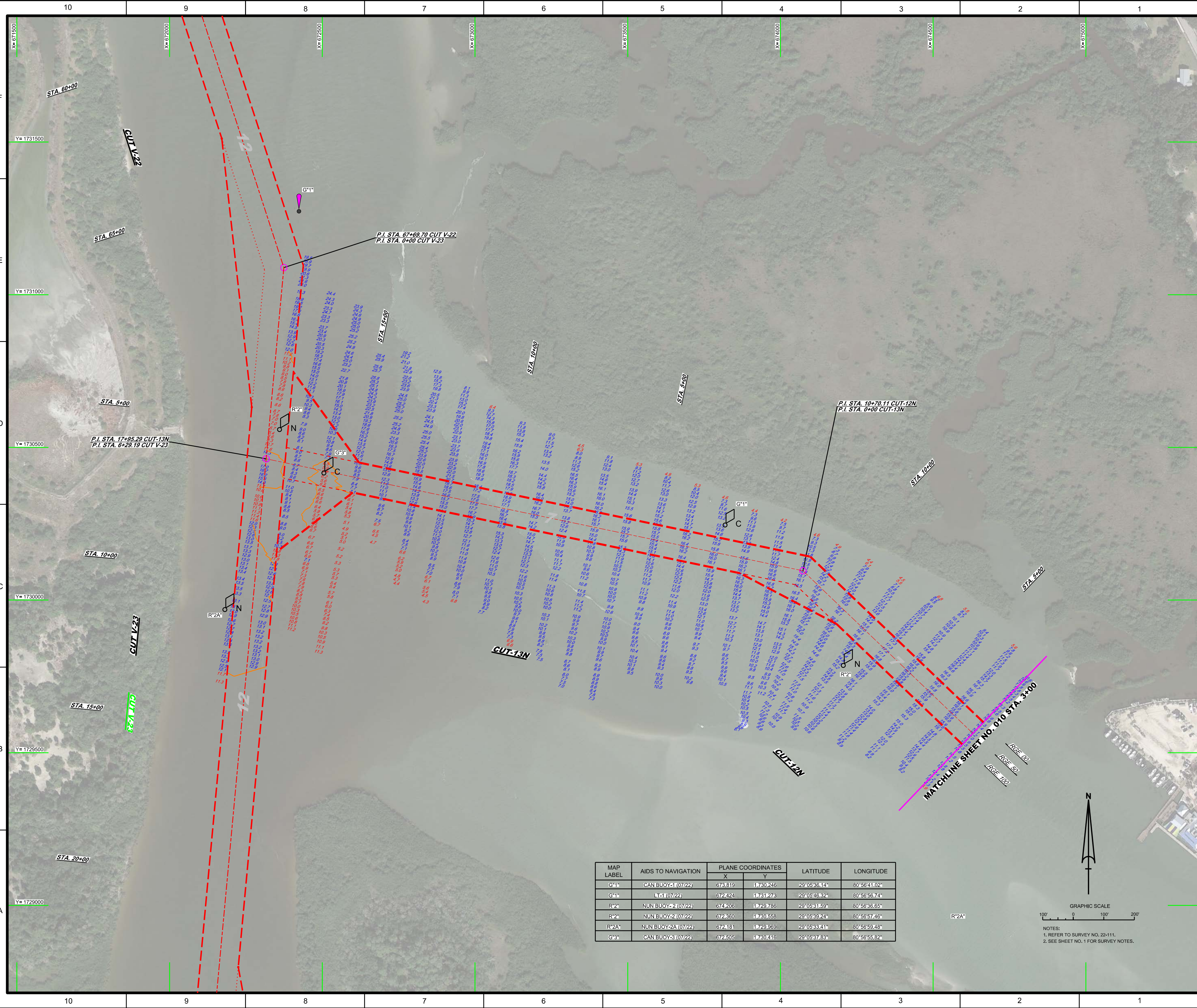
RGE 00
RGE 50
RGE 100

MATCHLINE SHEET NO. 011 STA. 3+00

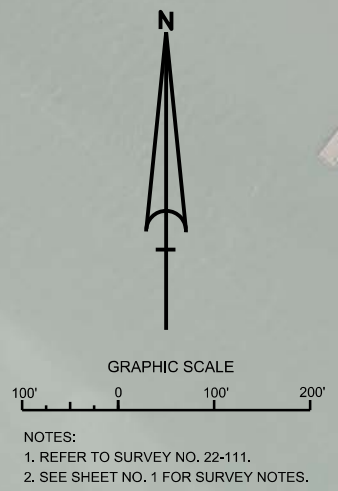
MATCHLINE SHEET NO. 009 STA. 15+00

MAP LABEL	AIDS TO NAVIGATION	PLANE COORDINATES		LATITUDE	LONGITUDE
		X	Y		
R*2A*	NUN BUOY-2A (07/22)	676.004	1728.239	29°05'16.26"	80°56'16.39"
R*2B*	NUN BUOY-2B (07/22)	676.482	1727.821	29°05'10.14"	80°56'11.01"

GRAPHIC SCALE
100' 0 100' 200'
NOTES:
1. REFER TO SURVEY NO. 22-111.
2. SEE SHEET NO. 1 FOR SURVEY NOTES.



MAP LABEL	AIDS TO NAVIGATION	PLANE COORDINATES		LATITUDE	LONGITUDE
		X	Y		
G-11	CAN BUOY-1 (07/22)	673.819	1730.245	29°05'36.14"	80°56'41.02"
G-11	LT-1 (07/22)	672.424	1731.273	29°05'46.32"	80°56'56.74"
R-2A	NUN BUOY-2 (07/22)	674.206	1729.786	29°05'31.59"	80°56'36.65"
R-2	NUN BUOY-2 (07/22)	672.360	1730.558	29°05'39.24"	80°56'57.46"
R-2A	NUN BUOY-2A (07/22)	672.181	1729.969	29°05'33.41"	80°56'59.48"
G-3	CAN BUOY-3 (07/22)	672.505	1730.416	29°05'37.83"	80°56'55.82"



NOTES:
1. REFER TO SURVEY NO. 22-11.
2. SEE SHEET NO. 1 FOR SURVEY NOTES.

